

A Balancing Act — Saving for Retirement and an Education



mfs.com

To successfully save for retirement, we feel it is critical to start early and keep saving. But how can you stay on track for retirement while balancing other financial priorities, such as saving for your children's education?

What is an employer-matching contribution?

Your employer puts in money to "match" the money that you put into your retirement account. For example, for every \$1.00 you save, your employer may contribute \$0.50, up to a certain percentage of your salary. There are different kinds of match structures, so look at what your employer offers and consider contributing enough to your retirement account to maximize your employer's match.

¹ You will be subject to federal income tax, and a 10% federal tax penalty may apply on earnings if amounts are withdrawn for something other than qualified education expenses. The Secure 2.0 Act of 2022 allows for 529 assets that have been maintained for at least 15 years to be rolled over on a tax-free basis to a Roth IRA for the benefit of the beneficiary, subject to a lifetime limit of \$35,000. This is effective for distributions after December 31, 2023. There are other restrictions not listed here that may apply. Consult your tax advisor.

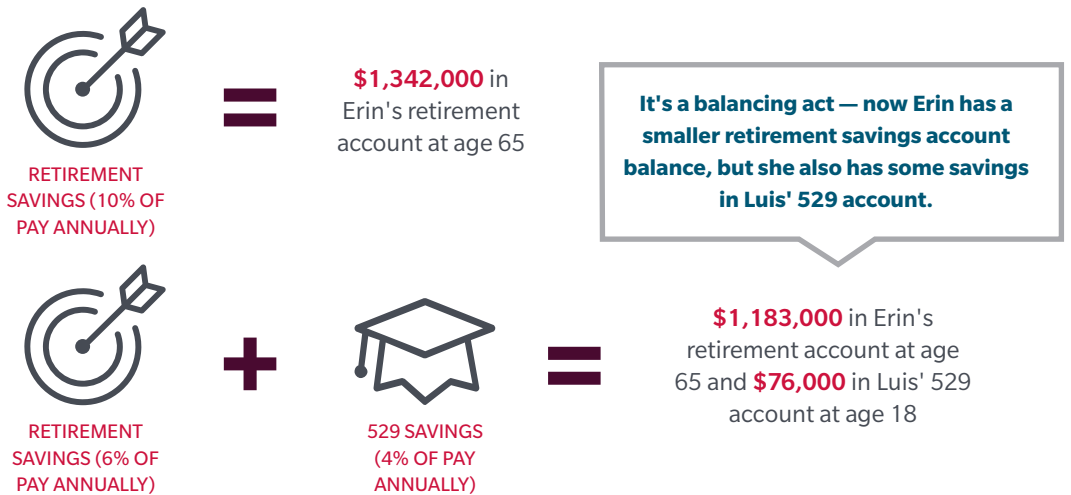
Fortunately, there are tax-effective ways to save for retirement and higher education that can help accomplish these goals. 401(k) plans and IRAs allow for tax-deductible retirement contributions and tax deferral on investment gains while 529 savings plans defer taxes on investment earnings and offer withdrawals free from federal taxes if used for qualified education expenses.¹

This might sound familiar

Erin started a new job right out of college and increased her retirement plan savings over the years. Now age 35, she saves 10% of her pay, which includes maximizing her employer's matching contributions (4.5%). She's made a great start building toward a comfortable retirement portfolio with over \$100,000 currently in her retirement account. However, life sometimes gets in the way of savings goals: Erin and her spouse just welcomed a new baby — Luis — into the family.

Erin knows funding an education can be expensive and is likely to be even more so in the future. So she has a dilemma — should she continue to save toward her retirement plan, or start setting aside money for Luis' education?

Let's look at how Erin's retirement account might be impacted if instead of directing 10% of her pay to her retirement plan, she directs 6% to retirement (continuing to maximize her employer's match) and 4% to a 529 plan.²



A Balancing Act — Saving for Retirement and an Education

2 Key assumptions

- Starting age = 22
- Starting salary = \$40,000
- Annual pay increase = 2%
- Employee contribution = 3% escalating by 1% per year up to 10%
- Employer contribution = 3% match on first 3% deferral, plus 50% of next 3% deferral (maximum match of 4.5%)
- 529 plan savings starts at age 35 and continues for 18 years until age 53
- Between ages 35 and 53, 6% of pay directed to retirement account and 4% of pay directed to 529 plan savings
- From age 54 to age 65, retirement account contribution goes back to 10%.
- Assumed fixed rate of return of 6% per year
- Age at retirement = 65

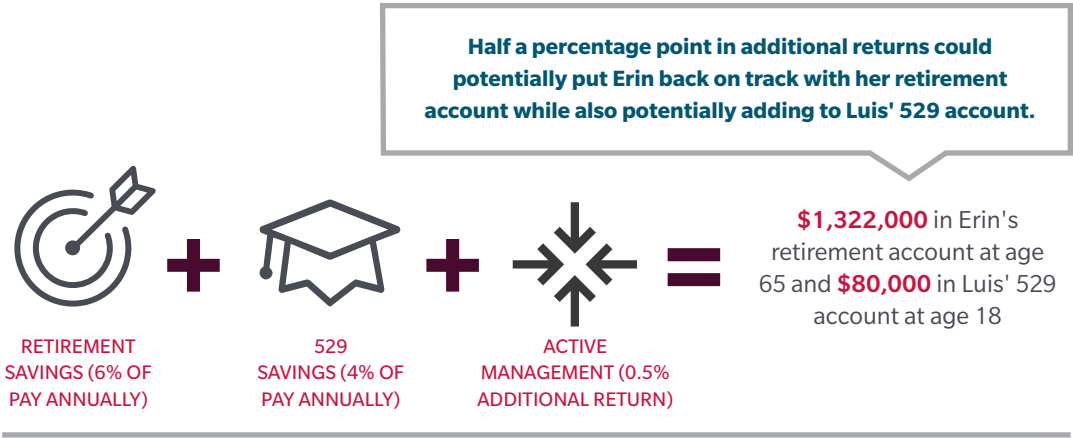
Excess returns are above and beyond the passive; for example, excess return of 0.5% uses a 6.5% annual return.

These hypothetical examples are for illustrative purposes only and are not intended to predict the returns of any investment choices. Rates of return will vary over time, particularly for long-term investments. There is no guarantee the selected rate of return can be achieved. Any investments may have fees and expenses that are not taken into account which would lower the performance. Regular investing does not ensure a profit or protect against loss in declining markets.

The good news is that Luis' hypothetical 529 account is assumed to grow to \$76,000, which would certainly help with future education expenses. However, this comes at a cost to Erin's retirement account; she is projected to have \$159,000 less than she thought she would.

Adding in active management

How might the results look if Erin, by investing in actively managed funds, were able to earn just a half-percent more a year on her investments from age 35 on?²



Here we see that the additional return of 0.5% per year, 6.5% altogether, could result in a retirement account balance of over \$1.3 million, more than her original retirement projection, and a projected 529 account balance of \$80,000, further helping defray future education expenses.

When considering active and passive funds (i.e., index investing and ETFs) there are some differences between the two investing styles. Investors may want to consider aligning with their goals and what is important to them. Index funds and ETFs generally track the indices or exchanges on which they are modeled. Active managers seek to outperform market indices and can make strategic decisions as well as attempt to manage risks in market fluctuations that are unavailable to index/ETF managers because of specific guidelines. Both passive and active investing involve risk. Neither approach guarantees positive results. Paying attention to long-term performance may provide greater insight into how a fund performs during both up and down markets, compared to focusing on short-term returns.

Key takeaways

- Early saving can form a foundation to help cushion unexpected changes in your retirement journey.
- Although active management can lose money, the possibility of added returns above an index from active management, often referred to as excess returns, can potentially help balance retirement and educational savings goals.

Keep in mind that all investments, including mutual funds, carry a certain amount of risk including the possible loss of the principal amount invested. The views expressed are those of the author(s) and are subject to change at any time. These views are for informational purposes only and should not be relied upon as a recommendation to purchase any security or as a solicitation or investment advice from the Advisor. No forecast can be guaranteed. MFS does not provide legal, tax, or accounting advice. Individuals should not use or rely upon the information provided herein without first consulting with their tax or legal professional about their particular circumstances. Any statement contained in this communication (including any attachments) concerning US tax matters was not intended or written to be used, and cannot be used, for the purpose of avoiding penalties under the Internal Revenue Code.